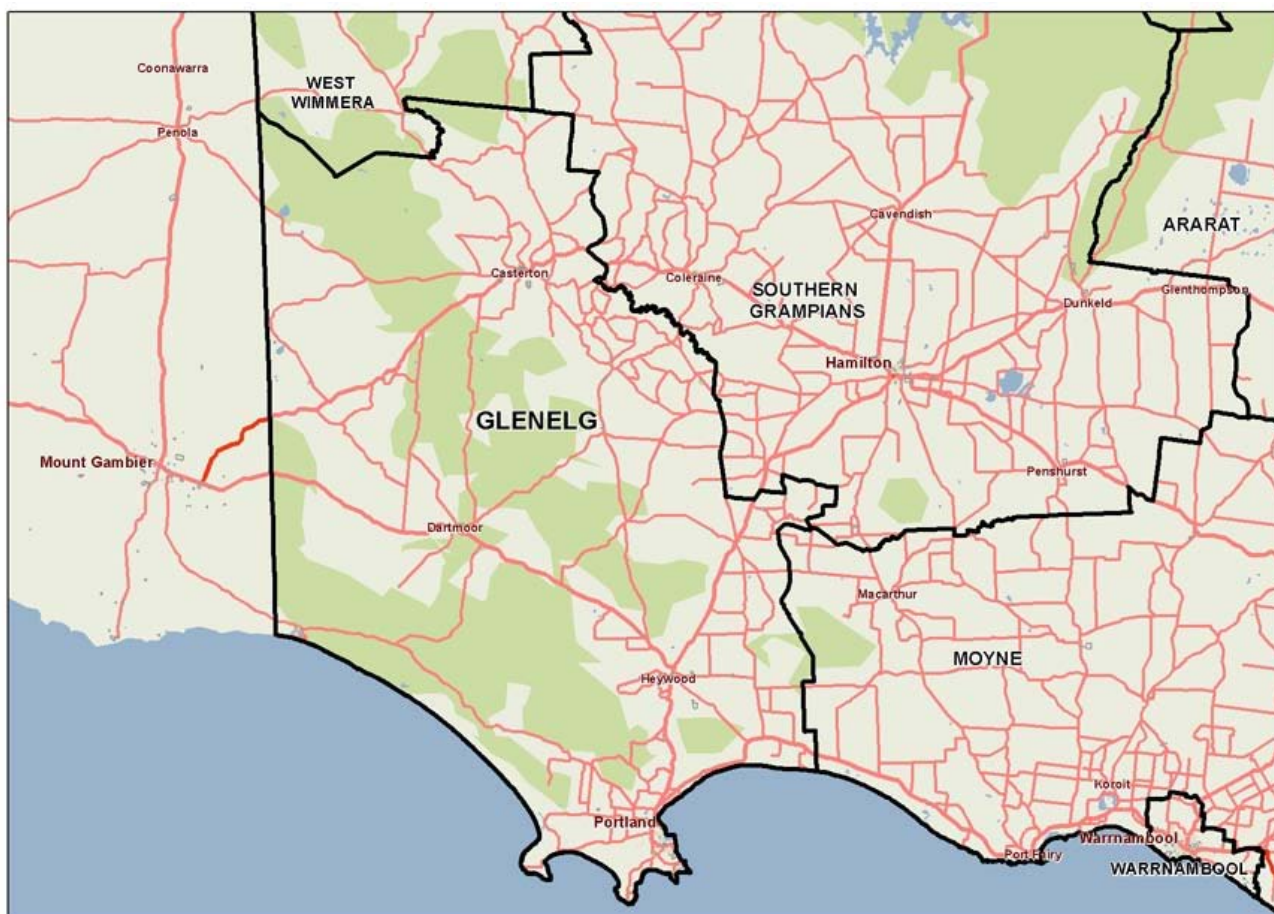


# Glenelg (S)



Glenelg is located in Victoria's south-west corner. Population growth has been low since 2001 and is projected to remain low for the next 10 years. Glenelg's population contains fewer 15-44 year olds than average and more adults aged 45 and over. Glenelg has a high Aboriginal and Torres Strait Islander population, and low levels of cultural diversity. Individual and household incomes are low, while food insecurity, mortgage stress and rental stress are around average. Educational attainment at year 9 level is below average, and relatively low percentages of the population have completed year 12 or attained a higher education qualification. Female life expectancy in Glenelg is the lowest of all LGAs. There are relatively high rates of overweight and obesity, persons not meeting physical activity guidelines and avoidable deaths. The rates of unintentional and intentional injury are well below average. Glenelg has high rates of HACC clients, drug and alcohol clients and mental health clients. The percentage of inpatient separations which are in a private hospital is one of the lowest in the state as is the per annum change in separations between 2001-02 and 2011-12. Emergency department presentations are also very low, about one fifth of the Victorian average, while GP attendances are consistent with the Victorian average.



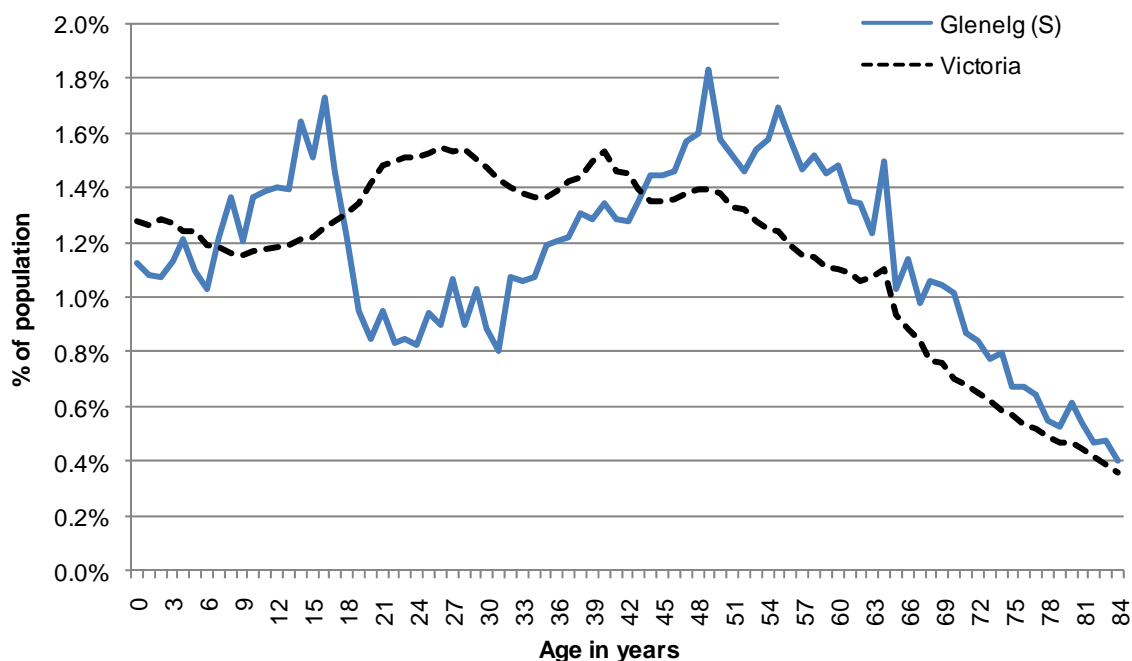
# 1 Community capacity

## Geography

Metropolitan/rural	Rural		
Departmental region	Barwon-South Western		
Area of LGA	6,218 km		
ASGS LGA code	22410		
Most populous community in LGA	Portland		
	Distance to Melbourne	355 km	
	Travel time to Melbourne	4 hours 58 minutes	
Remoteness area	Outer Regional Australia		
ARIA measures (low/average/high)	(2.63 / 3.38 / 5.37)		
Business land use	<1%	Industrial land use	<1%
Residential land use	<1%	Rural land use	72.0%
Other land use	27.5%		

## Demographics

2011 population profile



## Per annum population change

Time period	LGA	Victoria
2001–2011, actual change	-0.27%	1.42%
2011–2021, projected change	1.14%	1.62%

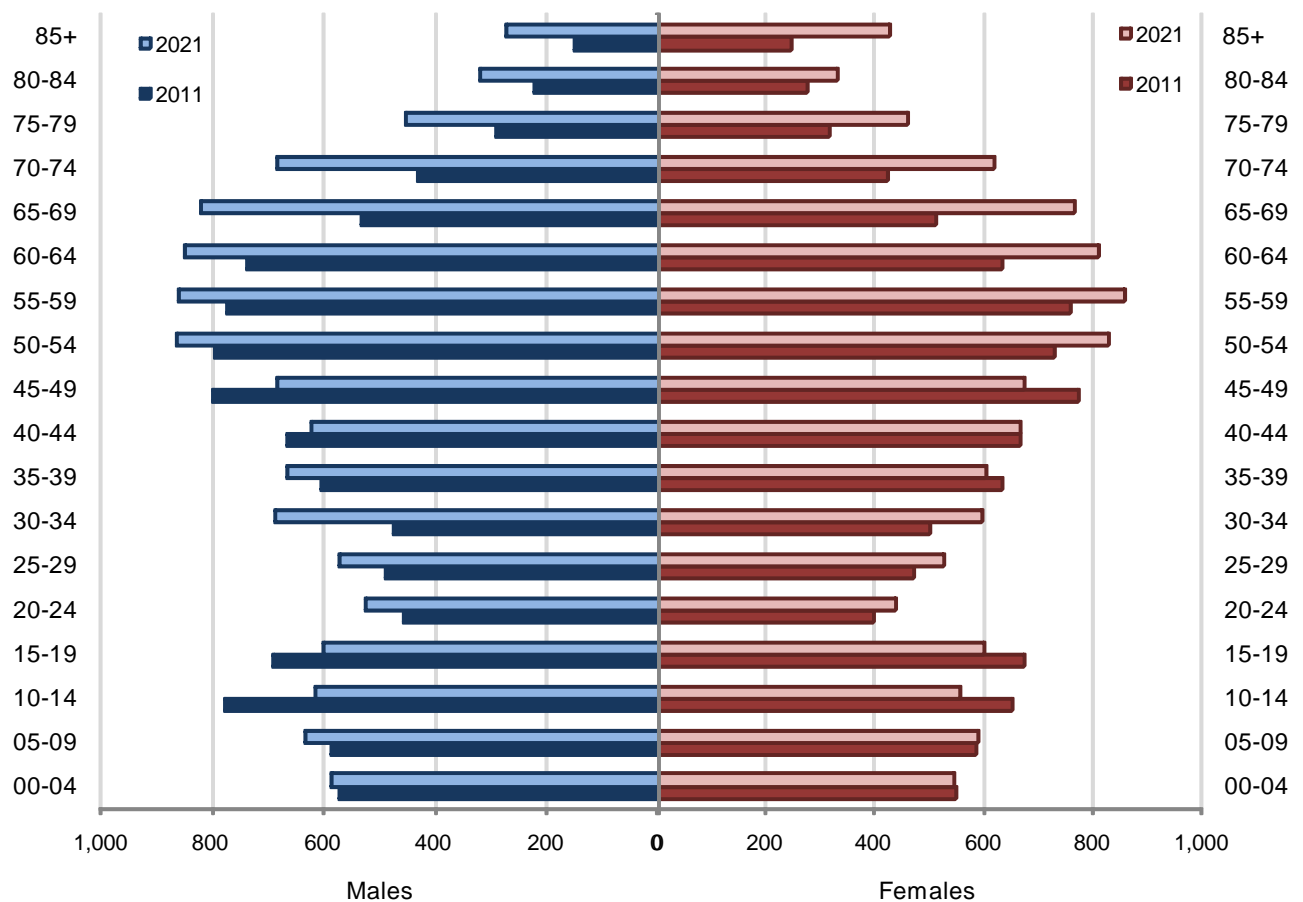
## 2011 population by age and sex

	Females	Males	Total	% total LGA population	% total VIC population
0-14	1,789	1,932	3,721	18.8%	18.2%
15-24	1,075	1,146	2,221	11.2%	13.9%
25-44	2,272	2,230	4,502	22.7%	29.1%
45-64	2,903	3,098	6,001	30.2%	24.8%
65-84	1,530	1,472	3,002	15.1%	12.1%
85+	247	149	396	2.0%	1.9%
<b>Total</b>	<b>9,816</b>	<b>10,027</b>	<b>19,843</b>	<b>100%</b>	<b>100%</b>

## Fertility rate

	LGA measure	Rank among LGAs	Victoria measure
Total fertility rate	1.87	56	1.79

## Population projections by age group and sex, 2011 and 2021



## Diversity

	LGA measure	Rank among LGAs	Victoria measure
Aboriginal and Torres Strait Islander population	2.16%	6	0.74%
Percentage of population born overseas	8.2%	64	27.7%
Percentage of population born in non-English speaking country	3.3%	68	20.9%
Top 5 overseas countries of birth	United Kingdom (3.1% of total population) New Zealand (1.3%) Netherlands (<1%) Philippines (<1%) Germany (<1%)		
Percentage speaking language other than English at home	2.4%	67	24.2%
Top 5 languages spoken other than English	Dutch (<1% of total population) German (<1%) Mandarin (<1%) Tagalog (<1%) Italian (<1%)		
Percentage with low English proficiency	0.2%	68	4.0%
New settler arrivals per 100,000 population	100.8	61	656.3
Humanitarian arrivals as a percentage of new settlers	0.0%	46	12.3%
Community acceptance of diverse cultures	42.3%	50	50.6%

## Social engagement and crime

	LGA measure	Rank among LGAs	Victoria measure
Index of Relative Socio-Economic Disadvantage	962.0	14	-
Percentage of households with broadband internet	63.1%	57	72.6%
Gaming machine losses per head of adult population	\$442	41	\$602
Family incidents per 1,000 population	11.3	23	9.1
Drug usage and possession offences per 1,000 population	3.0	32	3.4
Total offences per 1,000 population	62.6	39	70.6
Percentage who feel safe walking alone during the day	98.4%	41	97.0%
Percentage who feel safe on street alone after dark	74.9%	49	69.3%
Percentage who help out as a volunteer	31.1%	21	19.3%
Participation in citizen engagement in last year	62.2%	26	50.5%
Social networking used to organise time with family/friends	31.1%	37	35.1%
Percentage who believe there are good facilities and services in the LGA	74.5%	59	85.2%

## 2 Socio-economic factors

### Economic and employment characteristics

	LGA measure	Rank among LGAs	Victoria measure
Unemployment rate	5.9%	22	5.4%
Percentage of individuals with income less than \$400 per week	45.6%	14	39.9%
Percentage of females with income less than \$400 per week	55.2%	–	47.1%
Percentage of males with income less than \$400 per week	35.7%	–	32.1%
Percentage of families headed by one parent	15.6%	28	15.5%
Proportion who are female	79.8%	–	82.8%
Proportion who are male	20.2%	–	17.2%
Median household income	\$899	56	\$1,216
Percentage of low income families with children	2.4%	16	1.8%
Percentage of population with food insecurity	6.8%	26	5.6%

### Housing, transport and sustainability characteristics

	LGA measure	Rank among LGAs	Victoria measure
Mortgage stress	11.5%	36	11.4%
Rental stress	25.8%	34	25.1%
Percentage of rental housing that is affordable	79.3%	19	20.7%
Median house price	\$200,000	64	\$380,000
Median rent for three bedroom home	\$220	67	\$320
New dwellings approved per 1,000 population	3.3	65	8.9
Social housing as a percentage of total dwellings	4.2%	24	3.8%
Persons with at least 2 hour daily commute	–	–	11.6%
Percentage of dwellings with no motor vehicle	5.4%	51	8.7%
Passenger vehicles per 1,000 population	606.2	56	606.7
Percentage of passenger vehicles more than ten years old	56.3%	17	47.7%

## Education characteristics

	LGA measure	Rank among LGAs	Victoria measure
Full-time equivalent students	3,081.2	-	869,697.7
Percentage of year 9 students who attain national minimum standards in reading	86.3%	73	92.3%
Percentage of year 9 students who attain national minimum standards in writing	79.7%	75	89.4%
Percentage of year 9 students who attain national minimum standards in numeracy	92.3%	59	94.4%
Percentage of persons who did not complete year 12	67.4%	9	43.7%
Percentage of persons who completed a higher education qualification	23.4%	75	45.7%
Percentage of students attending government school	68.9%	23	61.6%

## 3 Health and wellbeing

### Health conditions

	LGA measure	Rank among LGAs	Victoria measure
Low birth weight babies	6.3%	50	6.6%
Percentage of persons reporting asthma	14.3%	8	10.7%
Percentage of persons reporting type 2 diabetes	6.4%	11	4.8%
Percentage of persons overweight or obese	59.0%	7	48.6%
Percentage of females overweight or obese	48.9%	17	40.3%
Percentage of males overweight or obese	71.0%	3	57.2%
Cancer incidence per 100,000 population	5.8	-	5.1
Cancer incidence per 100,000 females	4.6	-	4.5
Cancer incidence per 100,000 males	7.0	-	5.7
Ambulatory Care Sensitive Conditions (ACSC) – acute admissions per 1,000 population	14.5	45	14.5
ACSC – chronic admissions per 1,000 population	33.1	2	17.0
ACSC – vaccine preventable admissions per 1,000 population	0.9	19	0.8
Notifications of Pertussis per 1,000 population	0.5	76	1.6
Notifications of Influenza per 1,000 population	0.1	77	0.6
Notifications of Chlamydia per 1,000 population	2.9	47	3.5

## Health behaviours

	LGA measure	Rank among LGAs	Victoria measure
Percentage of persons 18+ who are current smokers	20.6%	29	19.1%
Percentage of females 18+ who are current smokers	23.2%	11	16.9%
Percentage of males 18+ who are current smokers	18.4%	54	21.4%
Percentage of persons who support smoking ban in outside seating area	71.3%	27	69.8%
Percentage of persons at risk of short-term harm from alcohol consumption	14.0%	17	10.2%
Percentage of persons who purchased alcohol in the past 7 days	38.8%	27	36.3%
Percentage of persons who do not meet fruit and vegetable dietary guidelines	49.6%	40	48.2%
Percentage of females who do not meet fruit and vegetable dietary guidelines	45.8%	18	41.9%
Percentage of males who do not meet fruit and vegetable dietary guidelines	55.4%	44	54.8%
Percentage of persons who drink soft drink every day	10.5%	52	12.4%
Percentage of persons who share a meal with family at least 5 days per week	67.8%	46	66.3%
Percentage of persons who do not meet physical activity guidelines	31.6%	5	27.4%
Percentage of females who do not meet physical activity guidelines	24.1%	56	27.2%
Percentage of males who do not meet physical activity guidelines	37.2%	2	27.5%
Percentage of persons who sit for at least 7 hours per day	20.2%	71	32.6%
Percentage of persons who visit a green space at least once per week	46.0%	48	50.7%
Percentage of infants fully breastfed at three months	45.9%	62	51.8%
Percentage of children fully immunised at 24–27 months	91.1%	66	93.4%
Breast cancer screening participation	57.9%	25	54.7%
Cervical cancer screening participation	56.3%	65	60.7%
Bowel cancer screening participation	40.4%	29	37.1%

## Aged and disability characteristics

	LGA measure	Rank among LGAs	Victoria measure
Percentage of population with need for assistance with core activity	6.3%	19	5.0%
People with severe and profound disability living in the community	4.6%	24	3.8%
Disability support pension recipients per 1,000 eligible population	87.0	19	55.7
Percentage of persons aged 75+ who live alone	43.2%	7	35.9%
Proportion who are female	66.7%	–	73.9%
Proportion who are male	33.3%	–	26.1%
Aged care places (high care) per 1,000 eligible population	59.3	5	42.2
Aged care places (low care) per 1,000 eligible population	51.8	25	45.7
Age pension recipients per 1,000 eligible population	755.4	29	704.5

## Life expectancy and wellbeing

	LGA measure	Rank among LGAs	Victoria measure
Male life expectancy	76.9	73	80.3
Female life expectancy	81.5	79	84.4
Percentage persons reporting fair or poor health	17.4%	42	18.3%
Percentage of females reporting fair or poor health	16.3%	46	17.5%
Percentage of males reporting fair or poor health	19.2%	37	19.2%
Percentage of persons reporting a high/very high degree of psychological distress	12.0%	29	11.4%
Percentage of persons sleeping less than 7 hours per day	32.9%	27	31.5%
Percentage persons with adequate work-life balance	49.0%	46	53.1%
Percentage of children developmentally vulnerable in one or more domains	15.1%	62	20.3%
Percentage of children developmentally vulnerable in two or more domains	8.8%	48	10.0%



## Injury and mortality

	LGA measure	Rank among LGAs	Victoria measure
Unintentional injuries treated in hospital per 1,000 population	30.0	76	61.7
Intentional injuries treated in hospital per 1,000 population	1.9	72	3.8
Percentage of unintentional injuries due to falls	35.5%	55	37.6%
Indirect standardised death rate per 100,000 population	6.3	22	5.7
Avoidable deaths per 100,000 population, 0–74 years, due to all causes	213.0	5	158.2
Avoidable deaths per 100,000 population, 0–74 years, due to cancer	65.7	30	61.4
Avoidable deaths per 100,000 population, 0–74 years, due to cardiovascular diseases	58.8	6	39.8
Avoidable deaths per 100,000 population, 0–74 years, due to respiratory diseases	12.8	13	8.4

## 4 Service system

### Services and access

	LGA measure	Rank among LGAs	Victoria measure
Medicare Local that LGA is located in	Great South Coast		
Primary care partnership	Southern Grampians-Glenelg Primary Care Partnership		
Number of hospitals/health services	3	–	294
General practitioners per 1,000 population	1.21	29	1.18
General practice clinics per 1,000 population	0.91	13	0.54
Dental service sites per 1,000 population	0.30	10	0.21
Allied health service sites per 1,000 population	0.71	31	0.56
Pharmacies per 1,000 population	0.20	42	0.20
Number of schools	18	–	2,238
Percentage of population near to public transport	33.7%	51	74.3%
Percentage of population with private health insurance	33.9%	67	48.0%

## Hospital utilisation

	LGA measure	Rank among LGAs	Victoria measure
Hospital inpatient separations per 1,000 population	442.7	49	425.5
Percentage of inpatient separations in private hospital	9.3%	77	37.0%
Main public hospital attended	Portland District Health		
Separations from most frequently attended public hospital	52.9%	34	–
Average length of stay, public hospital inpatients (days)	3.09	39	3.05
Average length of stay, total hospital inpatients (days)	3.09	17	2.87
Per annum change in hospital inpatient separations, 2001–02 to 2011–12	0.93%	75	3.68%
Projected per annum change in separations, 2011–12 to 2021–22	0.95%	70	2.72%
Ambulatory care sensitive conditions (ACSC) – admission rate per 1,000 population	47.8	9	31.9
ACSC – average length of stay (days)	4.90	57	5.21
Emergency department presentations per 1,000 population	65.6	77	259.6
Primary care type presentations to emergency, per 1,000 population	22.2	77	112.3

## Other service utilisation

	LGA measure	Rank among LGAs	Victoria measure
GP attendances per 1,000 population – male	4,463.9	33	4,573.8
GP attendances per 1,000 population – female	6,043.0	34	6,197.5
GP attendances per 1,000 population – total	5,236.1	34	5,390.8
HACC clients aged 0–69 per 1,000 target population	438.7	9	196.9
HACC clients aged 70 and over per 1,000 target population	429.0	29	339.6
Drug and alcohol clients per 1,000 population	10.6	7	5.1
Registered mental health clients per 1,000 population	26.4	3	10.3