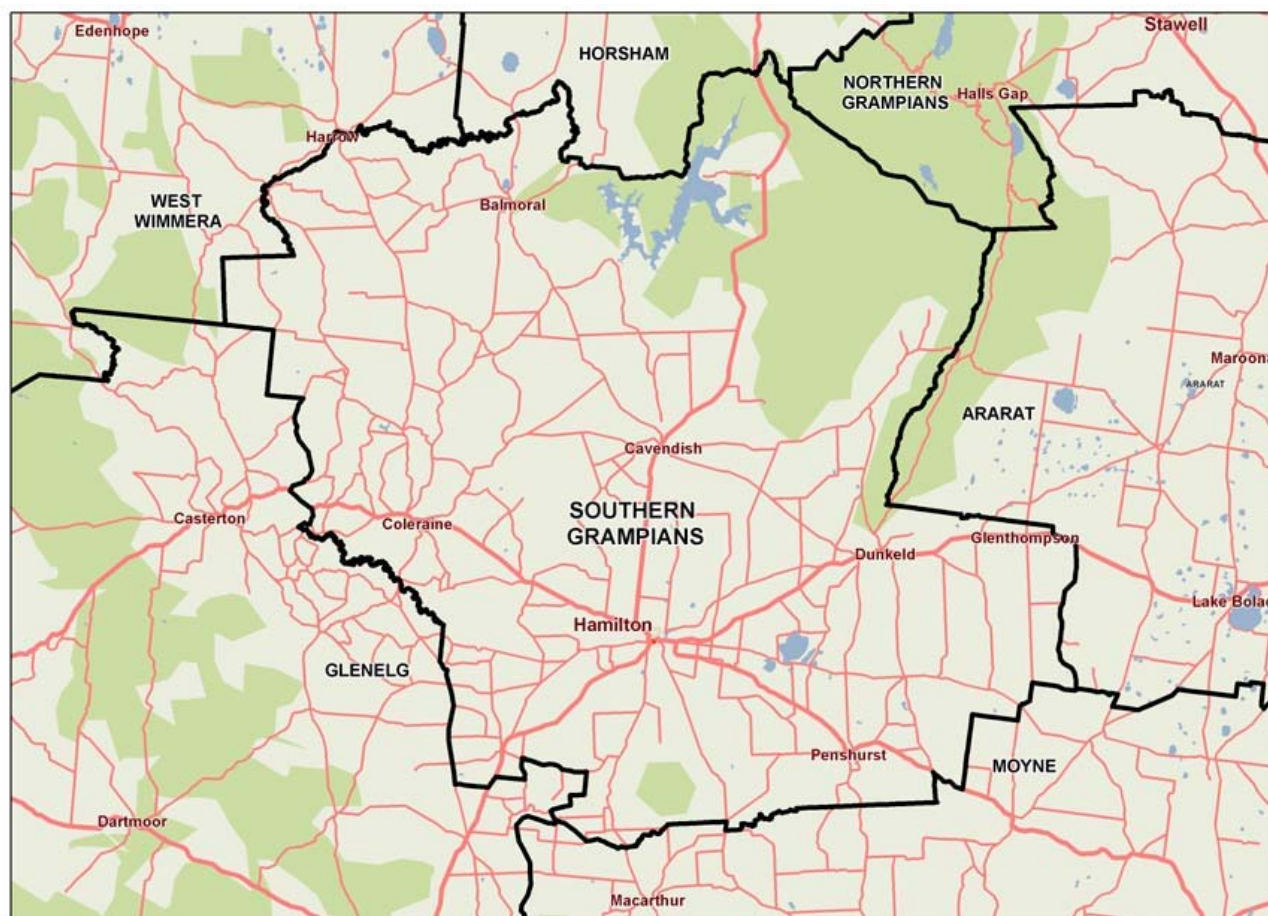


Southern Grampians (S)



Southern Grampians Shire is located about 290 kilometres west of Melbourne, centred on the town of Hamilton. The Shire has experienced a decline in population since 2001, and growth to 2022 is projected to be below average. People aged 25 to 44 are underrepresented in the population, while residents aged 45 plus are overrepresented. Southern Grampians has low levels of cultural diversity and high levels of volunteering. Southern Grampians scores close to the Victorian average on most economic indicators with low unemployment, and below average rental and mortgage stress. The proportion who are overweight or obese is third highest in the state. The rate of chronic ambulatory care sensitive conditions is high, while the rate of vaccine preventable ACSCs is low. The rates of childhood immunisation and breast and bowel cancer screening are above average. The percentage of persons aged 75 plus living alone is the highest of all LGAs, the rates of HACC clients are higher than average, and there are nearly three times as many registered mental health clients per 1,000 population as the state average. Rates of intentional and unintentional injuries are above average, as are avoidable deaths. The per annum increase in hospital inpatient separations has been slow since 2001-02 and is projected to remain lower than average through to 2021-22. The proportion of inpatient separations in private hospitals is well below average. GP attendances are much lower than average, while emergency department presentations (including primary care type) are above average.



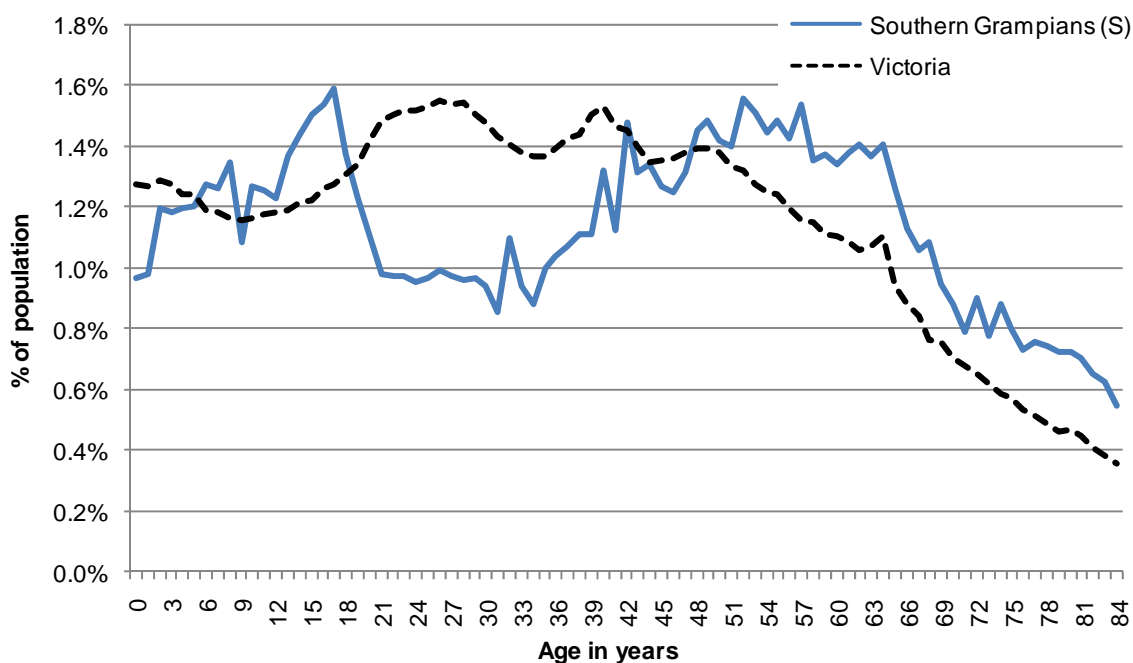
1 Community capacity

Geography

Metropolitan/rural			Rural
Departmental region			Barwon-South Western
Area of LGA			6,654 km
ASGS LGA code			26260
Most populous community in LGA			Hamilton
	Distance to Melbourne	295 km	
	Travel time to Melbourne	3 hours 49 minutes	
Remoteness area			Outer Regional Australia
ARIA measures (low/average/high)			(2.11 / 3.41 / 4.95)
Business land use	<1%	Industrial land use	<1%
Residential land use	<1%	Rural land use	82.5%
Other land use	16.9%		

Demographics

2011 population profile



Per annum population change

Time period	LGA	Victoria
2001–2011, actual change	-0.37%	1.42%
2011–2021, projected change	1.01%	1.62%

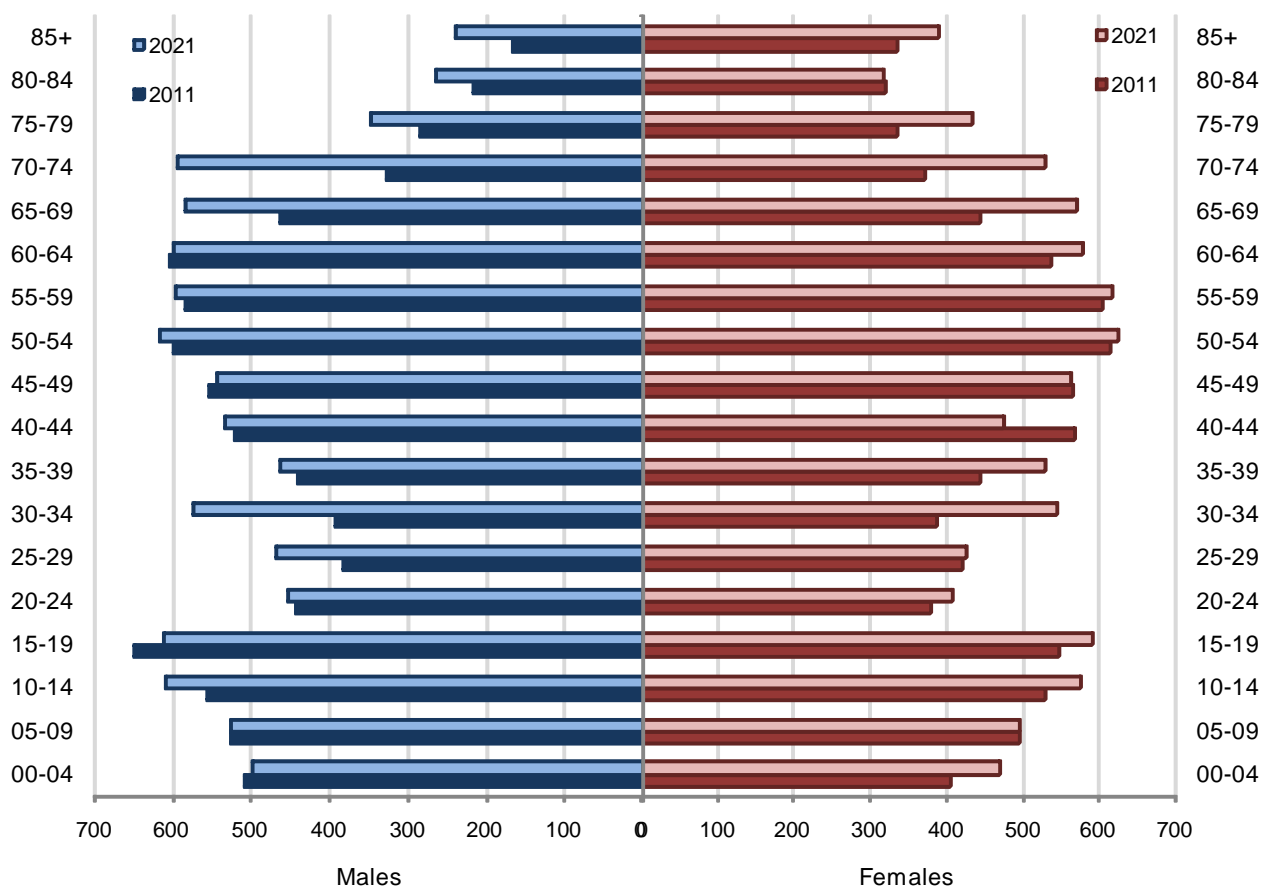
2011 population by age and sex

	Females	Males	Total	% total LGA population	% total VIC population
0-14	1,429	1,591	3,020	18.3%	18.2%
15-24	928	1,091	2,019	12.2%	13.9%
25-44	1,817	1,733	3,550	21.5%	29.1%
45-64	2,322	2,339	4,661	28.2%	24.8%
65-84	1,471	1,287	2,758	16.7%	12.1%
85+	336	166	502	3.0%	1.9%
Total	8,303	8,207	16,510	100%	100%

Fertility rate

	LGA measure	Rank among LGAs	Victoria measure
Total fertility rate	2.10	32	1.79

Population projections by age group and sex, 2011 and 2021



Diversity

	LGA measure	Rank among LGAs	Victoria measure
Aboriginal and Torres Strait Islander population	1.19%	24	0.74%
Percentage of population born overseas	7.6%	67	27.7%
Percentage of population born in non-English speaking country	2.7%	75	20.9%
Top 5 overseas countries of birth	United Kingdom (2.6% of total population) New Zealand (1.5%) Netherlands (<1%) South Africa (<1%) Germany (<1%)		
Percentage speaking language other than English at home	2.2%	72	24.2%
Top 5 languages spoken other than English	German (<1% of total population) Dutch (<1%) Mandarin (<1%) Cantonese (<1%) French (<1%)		
Percentage with low English proficiency	0.2%	70	4.0%
New settler arrivals per 100,000 population	127.2	51	656.3
Humanitarian arrivals as a percentage of new settlers	0.0%	46	12.3%
Community acceptance of diverse cultures	43.7%	47	50.6%

Social engagement and crime

	LGA measure	Rank among LGAs	Victoria measure
Index of Relative Socio-Economic Disadvantage	996.1	42	-
Percentage of households with broadband internet	61.2%	64	72.6%
Gaming machine losses per head of adult population	\$298	51	\$602
Family incidents per 1,000 population	10.1	27	9.1
Drug usage and possession offences per 1,000 population	2.3	47	3.4
Total offences per 1,000 population	55.8	46	70.6
Percentage who feel safe walking alone during the day	100.0%	1	97.0%
Percentage who feel safe on street alone after dark	86.9%	15	69.3%
Percentage who help out as a volunteer	34.3%	9	19.3%
Participation in citizen engagement in last year	59.3%	35	50.5%
Social networking used to organise time with family/friends	27.1%	60	35.1%
Percentage who believe there are good facilities and services in the LGA	82.0%	34	85.2%

2 Socio-economic factors

Economic and employment characteristics

	LGA measure	Rank among LGAs	Victoria measure
Unemployment rate	4.6%	46	5.4%
Percentage of individuals with income less than \$400 per week	41.7%	40	39.9%
Percentage of females with income less than \$400 per week	49.0%	–	47.1%
Percentage of males with income less than \$400 per week	33.8%	–	32.1%
Percentage of families headed by one parent	12.6%	60	15.5%
Proportion who are female	80.1%	–	82.8%
Proportion who are male	19.9%	–	17.2%
Median household income	\$908	54	\$1,216
Percentage of low income families with children	1.8%	41	1.8%
Percentage of population with food insecurity	2.9%	75	5.6%

Housing, transport and sustainability characteristics

	LGA measure	Rank among LGAs	Victoria measure
Mortgage stress	10.4%	51	11.4%
Rental stress	17.5%	70	25.1%
Percentage of rental housing that is affordable	70.6%	26	20.7%
Median house price	\$169,000	71	\$380,000
Median rent for three bedroom home	\$235	61	\$320
New dwellings approved per 1,000 population	2.5	72	8.9
Social housing as a percentage of total dwellings	3.4%	37	3.8%
Persons with at least 2 hour daily commute	4.6%	48	11.6%
Percentage of dwellings with no motor vehicle	6.9%	33	8.7%
Passenger vehicles per 1,000 population	623.0	38	606.7
Percentage of passenger vehicles more than ten years old	53.5%	38	47.7%

Education characteristics

	LGA measure	Rank among LGAs	Victoria measure
Full-time equivalent students	3,199.1	-	869,697.7
Percentage of year 9 students who attain national minimum standards in reading	93.9%	26	92.3%
Percentage of year 9 students who attain national minimum standards in writing	85.6%	55	89.4%
Percentage of year 9 students who attain national minimum standards in numeracy	95.1%	35	94.4%
Percentage of persons who did not complete year 12	62.1%	25	43.7%
Percentage of persons who completed a higher education qualification	30.3%	41	45.7%
Percentage of students attending government school	54.9%	71	61.6%

3 Health and wellbeing

Health conditions

	LGA measure	Rank among LGAs	Victoria measure
Low birth weight babies	5.7%	65	6.6%
Percentage of persons reporting asthma	9.1%	64	10.7%
Percentage of persons reporting type 2 diabetes	3.7%	55	4.8%
Percentage of persons overweight or obese	59.2%	3	48.6%
Percentage of females overweight or obese	52.2%	5	40.3%
Percentage of males overweight or obese	66.7%	11	57.2%
Cancer incidence per 100,000 population	6.4	-	5.1
Cancer incidence per 100,000 females	7.0	-	4.5
Cancer incidence per 100,000 males	5.8	-	5.7
Ambulatory Care Sensitive Conditions (ACSC) – acute admissions per 1,000 population	13.3	59	14.5
ACSC – chronic admissions per 1,000 population	29.6	8	17.0
ACSC – vaccine preventable admissions per 1,000 population	0.3	79	0.8
Notifications of Pertussis per 1,000 population	1.4	41	1.6
Notifications of Influenza per 1,000 population	0.1	76	0.6
Notifications of Chlamydia per 1,000 population	3.7	19	3.5

Health behaviours

	LGA measure	Rank among LGAs	Victoria measure
Percentage of persons 18+ who are current smokers	19.0%	47	19.1%
Percentage of females 18+ who are current smokers	19.2%	38	16.9%
Percentage of males 18+ who are current smokers	19.7%	46	21.4%
Percentage of persons who support smoking ban in outside seating area	68.7%	43	69.8%
Percentage of persons at risk of short-term harm from alcohol consumption	16.4%	7	10.2%
Percentage of persons who purchased alcohol in the past 7 days	36.7%	39	36.3%
Percentage of persons who do not meet fruit and vegetable dietary guidelines	47.6%	49	48.2%
Percentage of females who do not meet fruit and vegetable dietary guidelines	39.1%	57	41.9%
Percentage of males who do not meet fruit and vegetable dietary guidelines	57.3%	33	54.8%
Percentage of persons who drink soft drink every day	12.9%	37	12.4%
Percentage of persons who share a meal with family at least 5 days per week	72.7%	27	66.3%
Percentage of persons who do not meet physical activity guidelines	20.9%	70	27.4%
Percentage of females who do not meet physical activity guidelines	21.0%	71	27.2%
Percentage of males who do not meet physical activity guidelines	20.6%	63	27.5%
Percentage of persons who sit for at least 7 hours per day	23.2%	52	32.6%
Percentage of persons who visit a green space at least once per week	41.2%	66	50.7%
Percentage of infants fully breastfed at three months	44.6%	67	51.8%
Percentage of children fully immunised at 24–27 months	98.2%	5	93.4%
Breast cancer screening participation	64.7%	3	54.7%
Cervical cancer screening participation	60.2%	39	60.7%
Bowel cancer screening participation	44.0%	5	37.1%

Aged and disability characteristics

	LGA measure	Rank among LGAs	Victoria measure
Percentage of population with need for assistance with core activity	6.0%	26	5.0%
People with severe and profound disability living in the community	4.1%	42	3.8%
Disability support pension recipients per 1,000 eligible population	67.1	39	55.7
Percentage of persons aged 75+ who live alone	45.8%	1	35.9%
Proportion who are female	76.3%	–	73.9%
Proportion who are male	23.7%	–	26.1%
Aged care places (high care) per 1,000 eligible population	43.5	29	42.2
Aged care places (low care) per 1,000 eligible population	54.4	18	45.7
Age pension recipients per 1,000 eligible population	673.7	60	704.5

Life expectancy and wellbeing

	LGA measure	Rank among LGAs	Victoria measure
Male life expectancy	79.2	37	80.3
Female life expectancy	84.9	14	84.4
Percentage persons reporting fair or poor health	16.4%	55	18.3%
Percentage of females reporting fair or poor health	14.4%	56	17.5%
Percentage of males reporting fair or poor health	17.8%	47	19.2%
Percentage of persons reporting a high/very high degree of psychological distress	11.6%	33	11.4%
Percentage of persons sleeping less than 7 hours per day	29.8%	43	31.5%
Percentage persons with adequate work-life balance	41.8%	73	53.1%
Percentage of children developmentally vulnerable in one or more domains	15.4%	60	20.3%
Percentage of children developmentally vulnerable in two or more domains	9.0%	45	10.0%

Injury and mortality

	LGA measure	Rank among LGAs	Victoria measure
Unintentional injuries treated in hospital per 1,000 population	110.4	8	61.7
Intentional injuries treated in hospital per 1,000 population	5.0	14	3.8
Percentage of unintentional injuries due to falls	33.3%	64	37.6%
Indirect standardised death rate per 100,000 population	6.7	7	5.7
Avoidable deaths per 100,000 population, 0–74 years, due to all causes	192.0	16	158.2
Avoidable deaths per 100,000 population, 0–74 years, due to cancer	68.6	16	61.4
Avoidable deaths per 100,000 population, 0–74 years, due to cardiovascular diseases	50.9	14	39.8
Avoidable deaths per 100,000 population, 0–74 years, due to respiratory diseases	9.2	40	8.4

4 Service system

Services and access

	LGA measure	Rank among LGAs	Victoria measure
Medicare Local that LGA is located in	Great South Coast		
Primary care partnership	Southern Grampians-Glenelg Primary Care Partnership		
Number of hospitals/health services	3	–	294
General practitioners per 1,000 population	1.08	48	1.18
General practice clinics per 1,000 population	0.48	55	0.54
Dental service sites per 1,000 population	0.24	22	0.21
Allied health service sites per 1,000 population	0.91	15	0.56
Pharmacies per 1,000 population	0.18	52	0.20
Number of schools	18	–	2,238
Percentage of population near to public transport	43.4%	44	74.3%
Percentage of population with private health insurance	41.3%	37	48.0%

Hospital utilisation

	LGA measure	Rank among LGAs	Victoria measure
Hospital inpatient separations per 1,000 population	463.4	33	425.5
Percentage of inpatient separations in private hospital	11.2%	75	37.0%
Main public hospital attended	Hamilton Base Hospital		
Separations from most frequently attended public hospital	77.9%	13	–
Average length of stay, public hospital inpatients (days)	3.35	17	3.05
Average length of stay, total hospital inpatients (days)	3.31	11	2.87
Per annum change in hospital inpatient separations, 2001–02 to 2011–12	0.60%	78	3.68%
Projected per annum change in separations, 2011–12 to 2021–22	1.48%	59	2.72%
Ambulatory care sensitive conditions (ACSC) – admission rate per 1,000 population	42.3	15	31.9
ACSC – average length of stay (days)	6.04	13	5.21
Emergency department presentations per 1,000 population	393.0	14	259.6
Primary care type presentations to emergency, per 1,000 population	206.7	11	112.3

Other service utilisation

	LGA measure	Rank among LGAs	Victoria measure
GP attendances per 1,000 population – male	3,152.3	77	4,573.8
GP attendances per 1,000 population – female	4,603.0	73	6,197.5
GP attendances per 1,000 population – total	3,877.3	74	5,390.8
HACC clients aged 0–69 per 1,000 target population	635.0	3	196.9
HACC clients aged 70 and over per 1,000 target population	580.3	9	339.6
Drug and alcohol clients per 1,000 population	4.9	46	5.1
Registered mental health clients per 1,000 population	29.1	2	10.3